

The logo for Howard Morley & Sons is positioned in the top right corner of the image. It features the company name in a classic, black, serif font. The ampersand is particularly stylized, with long, elegant curves. The background of the entire image is a photograph of a two-story building with a dark brown wooden upper level and a red brick lower level. The building has a large stone patio in front, partially covered with green ivy. There are several windows and a set of double doors. The scene is set against a backdrop of lush green trees under a blue sky with scattered white clouds.

Howard Morley  
& Sons

PER MONTH

**£1,950 Per Month**

**Chiddingfold Road**

Godalming, GU8 4PB



Approximate Gross Internal Area  
63.0 sq m / 678.12 sq ft

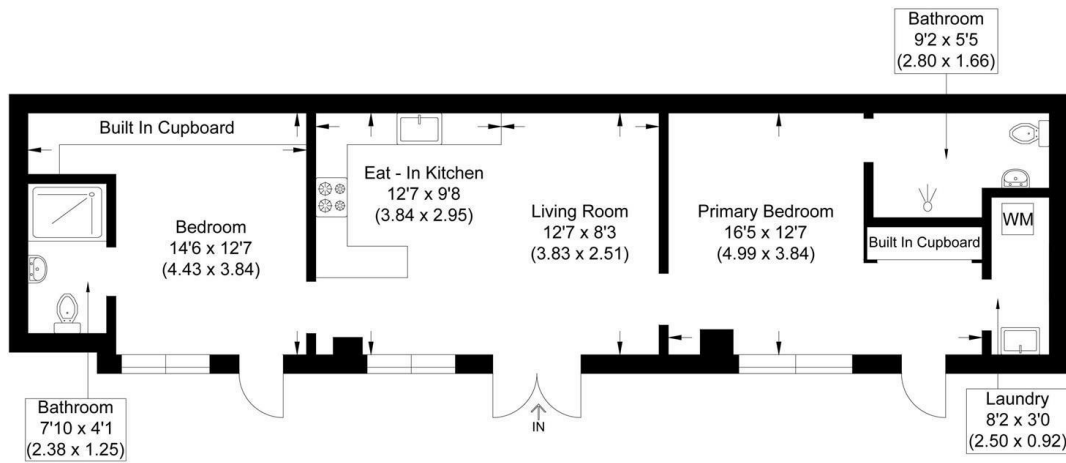


Illustration for identification purposes only, measurements are approximate, not to scale.

2 |

2 |

1 |

Energy Efficiency Rating		Current	Potential
Very energy efficient - lower running costs			
(92 plus) A			
(81-91) B			
(69-80) C			72
(55-68) D			
(39-54) E		48	
(21-38) F			
(1-20) G			
Not energy efficient - higher running costs			
England & Wales		EU Directive 2002/91/EC	

Agents Note: Whilst every care has been taken to prepare these particulars, they are for guidance purposes only. All measurements are approximate and are for general guidance purposes only and whilst every care has been taken to ensure their accuracy, they should not be relied upon and potential buyers/tenants are advised to recheck the measurements

Howard Morley  
& Sons

OFFICE ADDRESS  
276 High Street  
Guildford  
Surrey  
GU1 3JL

OFFICE DETAILS  
01483 575 304  
lettings@hmorley.co.uk  
hmorley.co.uk